

INSTRUCTION MANUAL

Pediatric CPR Manikins

Kim (100-2901/100-2901B)
Kevin (100-2976/100-2976B)
Kyle (100-2951/100-2951B)



About the Simulator



The Pediatric CPR Manikins come fully assembled and ready to use.

CROSS-CONTAMINATION ELIMINATION SYSTEM

The mouth piece separates from the head by gently pulling it out of the face depression and away from the small valve retainer (blue). Clean face piece inserts into the face depression by putting the nose end of the face piece into the facial depression and then snapping the jaw end of the face piece into position.



Each student should receive a clean, sterilized mouth piece at the beginning of class to use through the day's work. At the end of the day, the face pieces should be decontaminated by using your local Health Department protocols for disinfecting.

Note: Do not autoclave. Excessive heat will destroy the plastic. Clean with any water soluble cleaning substance.

The airway/lung system is a single piece unit with a one-way valve incorporated to prevent biological movement back out toward the rescuer's contact with the face piece. At the end of the day, the airway/lung system bag is discarded and a new lung system installed. Any other use of the airway/lung system will not guarantee the elimination of cross-contamination.

Set Up

INSTALLING A NEW AIRWAY/LUNG SYSTEM

Remove the old lung system

Steps:

1. Remove face piece.
2. Remove the chest overlay skin



Actual product may vary slightly from photo. Nasco reserves the right to change product color, materials, supplies, or function as needed.

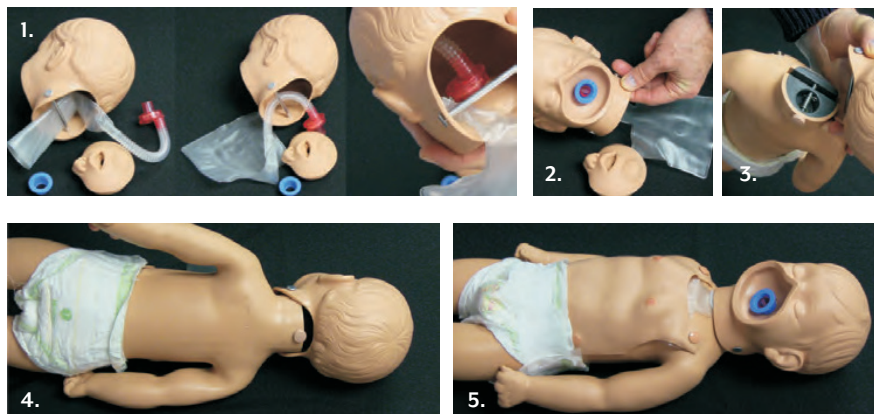
3. Turn the baby onto its stomach and pull the knob at the back of the neck away from the baby

Note: It is not necessary to unscrew the head rod.

4. Lift the head out of the neck slot.
5. Twist and pull the blue retainer off from the front of the face depression.
6. Pull the one-way valve out of the face depression.
7. Pull the lung out of the head.



Set Up



Insert the new lung system

Steps:

1. Insert the new airway/lung system one-way valve over the back side of the neck rod and into the hole of the back of the face depression.
2. Push and twist the blue retainer over the one-way valve port extending through the front of the face depression to hold the lung in place.
3. Insert the neck rod in the neck slot by pulling the knob away from the back of the manikin's neck.
4. Release the knob so that the plunger rod captures the neck rod in the neck slot.
5. Spread the lung bag over the baby's chest.
6. Snap the chest overlay back in place on the baby's chest.

Instructions for Use

To install ventilation

Steps:

1. Use the chin lift method to clear the airway.
2. Blow through the mouth piece.

To do compressions

Steps:

1. Place fingers in the appropriate location.
2. Depress the foam filled body the appropriate distance for the size of the child.



CLEANING THE MANIKIN

Note: Do not autoclave. Excessive heat will destroy the plastic. Use Health Department protocols for disinfecting. Use any water soluble cleaning agent to clean the surface of any grime or dirt. Store the manikin dry in temperatures considered comfortable for humans. Excessive heat from storing in locations such as the trunk of your car will likely result in deformation of the head. Storing in cold temperatures may result in cracking the plastic. If it gets cold, handle it gently until the plastic warms up to comfortable room temperatures. If the head deforms from pressure associated with storing in a warm environment, remove the head from the manikin and immerse it in a pot of steaming water for about 20 seconds. The hot water will allow the head to spring back to its original shape. Set the head on a flat surface and allow to cool in its molded shape. Then install it back on the body.

WARRANTY

NASCO HEALTHCARE warrants their products to be free from defects in materials and/or workmanship for a period of three years from the date of purchase, as evidenced by the date on the invoice of the product shipment to the end user. The warranty expressly does not cover abuse, accidental or purposeful damage, or any form of modification to the product. NASCO HEALTHCARE reserves the right to either replace affected parts or the entire unit, at their sole discretion, after investigating and reviewing the actual product and the damage. In most instances, a digital photo of the product in question showing the damage will help qualify a product for return to the factory. At no time will any product be accepted at the factory without proper return authorization issued by NASCO HEALTHCARE. Freight and shipping charges are the sole responsibility of the end user. No product will be received with shipping charges due. Any product considered for warranty work must be identified by serial number and invoice number from the agency through whom the product was purchased. Without this information the product will not receive a return authorization number as required.

RETURN POLICY

Should it be necessary to return an item for credit or for any other reason, contact our Customer Care Department to obtain an RGA Number. Please refer to your invoice number when phoning in your request Customer Care Department.



NASCO HEALTHCARE
16 Simulaid Drive
Saugerties, NY 12477
1-833-NASCOHC (627-2642)
info@nascohealthcare.com
www.nascohealthcare.com